

**RARE AND NEW FOR THE LITHUANIAN FAUNA SPECIES OF LEPIDOPTERA***IVINSKIS POVILAS<sup>1</sup>, JOLANTA RIMŠAITĖ<sup>1</sup>, ŽILVINAS PŪTYS<sup>2</sup>, VAIDA PAZNEKAITĖ<sup>3</sup>*<sup>1</sup>Nature Research Centre, Akademijos 2, LT-08412, Vilnius, Lithuania.E-mail: <sup>1</sup>entlab@gmail.com; <sup>2</sup>zilvinas.putys@gamtc.lt; <sup>3</sup>p\_vaida2005@yahoo.com**Introduction**

After examination of newly collected and determined material in the collection of the Laboratory of Entomology (Nature Research Centre) 5 new and 59 rare for the Lithuanian fauna Lepidoptera species from 27 families were identified and are presented in this paper.

**Material and Methods**

The data were collected during field investigations by the authors P. Ivinskis (P.I.), J. Rimšaitė (J.R.), Ž. Pūtys (Ž.P.) and Vaida Paznekaitė (V.P.), some data – by Agata Skorb (A. K) and J. P. Kaitila (J.- P. K). Breeding from larvae, netting, light and wine trapping were used to collect moths. Light trapping was performed with screen (160 W mixed light lamp) and automatic traps with 300 W solar type lamps. The material was identified using the works of Bengtsson *et al.*, 2008, Bengtsson & Johansson, 2011, Slamka, 2010. Data on distribution and faunistics follows Aarvik *et al.*, 2017. Taxonomical treatment and distribution follows the Fauna Europaea database (Karsholt & Nieuwerkerken, 2013). The specimens are deposited in the collection of Nature Research Centre. Species new for the Lithuanian fauna are marked with an asterisk (\*).

## List of localities

Locality	Administrative district	Coordinates (LAT, LONG)
Alksnynė	Neringa mun.	55.65749, 21.12161
Baltoji Vokė	Šalčininkai district	54.46533, 25.13192
Būtingė (1)	Kretinga district	56.06820, 21.06659
Būtingė (2)	Kretinga district	56.07025, 21.11042
Dūkštų Ažuolynas f.	Vilnius district	54.84306, 24.97028
Eišiškės	Šalčininkai district	54.16656, 25.00539
Juodkrantė	Neringa mun.	55.52239, 21.11575
Kairėnai	Vilnius mun.	54.73747, 25.41153
Kalniškės	Vilnius district	54.84681, 25.17739
Liubavas	Kalvarija mun.	54.36201, 23.01356
Lokėnėliai	Jonava district	55.09284, 24.32813
Marcinkonys	Varenė district	54.04186, 24.38997
Nagliai Nat. R., 26 km	Neringa mun.	55.48672, 21.10876

Nagliai Nat. R., 29 km	Neringa mun.	55.44019, 21.07547
Nida (1)	Neringa mun.	55.28695, 20.97464
Nida (2)	Neringa mun.	55.28706, 20.96334
Pakrėmpė	Trakai district	54.49754, 25.11747
Perloja	Varėna district	54.20778, 24.37556
Raguva	Panevėžys district	55.56244, 24.6266
Romainiai	Kaunas mun.	54.92117, 23.84846
Rūdninkų Giria B. P.	Šalčininkai district	54.38558, 25.107424
Smėlynė	Vilnius mun.	54.74997, 25.37807
Smiltynė	Klaipėda mun.	55.72033, 21.0986
Užukalnis	Prienai district	54.59855, 24.38511
Vilnius	Vilnius munic.	54.68543, 25.19807

### List of species

#### ADELIDAE

##### *Adela cuprella* (Denis & Schiffermüller, 1775)

Juodkrantė, 06 05 2019, 2 spec. (P.I., J.R.).

##### *Adela reaumurella* (Linnaeus, 1758)

Juodkrantė, 06 05 2019, 7 spec. (P.I., J.R.).

#### TINEIDAE

##### *Infurcitinea ignicomella* (Heydenreich, 1851)

Perloja, 30 06 2019, 1 spec. (P.I., J.R.).

#### GRACILLARIIDAE

##### *Caloptilia falconipennella* (Hübner, 1813)

Kalniškės, 01 10 2019, 2 spec. (P.I., J.R.).

##### *Caloptilia populetorum* (Zeller, 1839)

Kalniškės, 17 10 2019, 1 spec. (P.I., J.R.).

##### *Parectopa robiniella* (Clemens, 1863)

Eišiškės, some mines (A. S.); Vilnius, Romainiai, Smiltynė from July to October 2019, numerous mines on *Robinia* sp. (P.I., J.R.).

##### *Phyllonorycter medicaginella* (Gerasimov, 1930)

Smiltynė, 07 08 2019, five mines on *Medicago* sp, im. 15 08 2019 (P.I., J.R.).

##### *Phyllonorycter trifoliella* (Gerasimov, 1933)

Smiltynė, 07 08 2019, four mines on leaves of *Trifolium* sp., im. 12 08 2019 (P.I., J.R.).

#### PLUTELLIDAE

##### *Rhigognostis hufnagelii* (Zeller, 1839)

Pakrėmpė, 18 06 2019, 1 spec. (P.I., J.R.).

#### GLYPHIPTERIGIDAE

##### *Orthotelia sparganella* (Thunberg, 1798)

Kalniškės, 28 07 2019, 1 spec. (P.I., J.R.).

#### ARGYRESTHIIDAE

##### *Argyresthia pulchella* Lienig & Zeller, 1846

Kalniškės, 26 06 2019, 3 spec. (P.I., J.R.).

YPONOMEUTIDAE

***Yponomeuta irrorella* (Hübner, 1796)**

Kalniškės, 26 06 2019, 1 spec. (P.I., J.R.).

YPSOLOPHIDAE

***Ochsenheimeria taurella* (Denis & Schiffermüller, 1775)**

Būtingė (2), 08 2019, meadow close to mixed forest, 5 spec. (P.I., J.R.).

CHOREUTIDAE

**\**Choreutis diana* (Hübner, 1822)**

Lokėnėliai, 27 07 2018 1 spec.(V.P).

TORTRICIDAE

***Cochylimorpha straminea* (Haworth, 1811)**

Kalniškės 26 06 2019, 1 spec. (P.I., J.R.).

***Acleris cristana* (Denis & Schiffermüller, 1775)**

Kalniškės, 20 05 2019, 1 spec., 09 10 2019, 8 spec. (P.I., J.R.).

***Acleris lorquiniana* (Duponchel, 1835)**

Pakrėmpė, 18 06 2019, 1 spec. (P.I., J.R.).

***Ancylis selenana* (Guenée, 1845)**

Marcinkonys, 29 07 2019, 8 spec. (P.I., J.R.).

***Endothenia nigricostana* (Haworth, 1811)**

Raguva 03 06 2019 1 spec. (P.I., J.R.).

***Cydia strobilella* (Linnaeus, 1758)**

Raguva, 08 05 2019, 5 spec. (P.I., J.R.).

***Pammene argyrana* (Hübner, 1799)**

Dūkštų Ažuolynas f., 28 04 2019 2 spec. (P.I., J.R.).

***Pammene splendidulana* (Guenée, 1845)**

Raguva, 19 05 2019, 1 spec. (P.I., J.R.).

**\**Grapholita gemmiferana* (Treitschke, 1835)**

Liubavas 01 06 2019 1 spec.(Ž.P)

SESIIDAE

***Synanthedon formicaeformis* (Esper, 1783)**

Kalniškės 25 05 2019, 4 spec. (P.I., J.R.).

AUTOSTICHIDAE

***Oegoconia deauratella* (Herrich-Schäffer, 1854)**

Kalniškės 11 07 2019, 1 spec. (P.I., J.R.).

DEPRESSARIIDAE

***Levipalpus hepatariella* (Lienig & Zeller, 1846)**

Rūdninkų Giria B. P., 10 08 2019 15 spec., 20 08 2019 13 spec. (P.I., J.R.).

***Anchinia daphnella* (Denis & Schiffermüller, 1775)**

Kalniškės, 13 06 1 spec., 17 06 1 spec., 27-30 2019 1 spec. (P.I., J.R.).

***Orophia ferrugella* (Denis & Schiffermüller, 1775)**

Kalniškės, 26 06 2019, 1 spec. (P.I., J.R.).

GELECHIIDAE

***Filatima ukrainica* Piskunov, 1971**

Nagliai Nat. R., 29 km, 06 06 2019 branches of *Salix rosmarinifolia* with damaged leaves were collected. Imago, 2 specimens, hatched from the branches on 20 06 2019. 10 imagos near bushes were observed at this place from 11am until 2pm on 23 06 2019 (P.I., J.R.).

***Nothris gregerseni* Karsholt & Šumpich, 2015**

Rūdinkų Giria B. P., 10 08 2019, 11 spec. (P.I., J.R.).

***Monochroa divisella* (Douglas, 1850)**

Dūkštų Ažuolynas f., 25 06 2019 1 spec. (P.I., J.R.).

***Parachronistis albiceps* (Zeller, 1839)**

Dūkštų Ažuolynas f., 07 06 2019 2 spec. 2019 2 spec. (P.I., J.R.).

***Chionodes lugubrella* (Fabricius, 1794)**

Rūdinkų Giria B. P., 01 06 2019, 1 spec., 03 06 2019 2 spec. (P.I., J.R.).

## COLEOPHORIDAE

***Metriotes lutarea* (Haworth, 1828)**

Kalniškės, 15 05 2019, 2 spec.; Raguva, 08 05 2019, 10 spec. (P.I., J.R.)

**\**Coleophora amellivora* Baldizzone, 1979**

Smėlynė, 23 06 2017, 1 ♂. (P.I., J.R.).

## SCYTRIDAE

***Scytris limbella* (Fabricius, 1775)**

Raguva, 12 08 2019, 1 spec. (P.I., J.R.).

## COSMOPTERIGIDAE

**\**Ascalenia viviparella* Kasy, 1969**

Kalniškės, 12 09 2018, 1 ♂ (P.I., J.R.).

## NYMPHALIDAE

***Lopinga achine* (Scopoli, 1763)**

Juodkrantė, 23 06–09 07 2019, 3 spec., 09–22 07 2019, 4 spec. (P.I., J.R.).

## LYCAENIDAE

***Lycaena dispar* (Haworth, 1802)**

Kalniškės 28 08 2019, 1 spec.; Liubavas 05 06 2019, 1 spec.; Smiltynė, 11 06 2019, 1 spec. (P.I., J.R.).

***Plebejus argyrognomon* (Bergsträsser, 1779)**

Naglai Nat. R., 29 km, 20 06 2019, 1 spec. (P.I., J.R.).

## PYRALIDAE

***Eurhodope cirrigerella* (Zincken, 1818)**

Kalniškės, 27–30 06 2019, 1 spec. (P.I., J.R.).

***Nephterix angustella* (Hübner, 1796)**

Baltoji Vokė, 11 09 2017, 1 spec.; Nida (1), 16 08 2019, 1 spec. (P.I., J.R.).

**\**Paralipsa gularis* (Zeller, 1877)**

Kairėnai, 14 07 2018, 1 spec. (Ž.P.).

***Achroa grisella* (Fabricius, 1794)**

Juodkrantė, 02 09 2019, 1 spec. (P.I., J.R.).

***Cynaeda dentalis* (Denis & Schiffmüller, 1775)**

Alksnynė, 06 08 2019, 1 spec. (P.I., J.R.).

## CRAMBIDAE

***Sclerocoma acutellus* (Eversmann, 1842)**

Kalniškės, 03–07 06, 2 spec., 08 06 1 spec., 13 06 2019 1 spec. 1 spec. (P.I., J.R.).

***Nomophila noctuella* (Denis & Schiffmüller, 1775)**

Juodkrantė, 21 05 2019, 1 spec., 09 06 2019, 1 spec.; Karklė, 22 05 2019, 1 spec. (P.I., J.R.).

***Evergestis limbata* (Linnaeus, 1767)**

Juodkrantė, 02 09 2019, 1 spec. (P.I., J.R.).

PTEROPHORIDAE

***Oxyptilus tristis* (Zeller, 1841)**

Užukalnis, 19 08 2018, 1 ♂ (Ž. P.)

GEOMETRIDAE

***Hemistola chrysoprasaria* (Esper, 1795)**

Perloja, 30 06 2019, 1 spec. (P.I., J.R.).

***Idaea ochrata* (Scopoli, 1763)**

Nida (1), 09 07 2019, 2 spec. (P.I., J.R.).

***Lampropteryx otregiata* (Metcalf, 1917)**

Kalniškės 13 08 2019, 1 spec.; Marcinkonys, 29 07 2019, 1 spec. (P.I., J.R.).

***Mesotype didymata* (Linnaeus, 1758)**

Juodkrantė, 09 07 2019, 4 spec. (P.I., J.R.).

***Charissa obscurata* (Denis & Schiffermüller, 1775)**

Nagliai Nat. R., 26 km, 07 08 2019, 1 spec. (P.I., J.R.).

***Campaea margaritaria* (Linnaeus, 1761)**

Būtingė, 17 08 2019, 3 spec.; Juodkrantė, 23 08 2019, 6 spec.; Kalniškės, 26 08 2019, 1 spec. (P.I., J.R.).

BRACHMAEIDAE

***Lemonia dumii* (Linnaeus, 1761)**

Nagliai Nat. R., 29 km, 10 09 2018, 1 damaged spec. (P.I., J.R.).

NOCTUIDAE

***Thaumetopoea pinivora* (Treitschke, 1834)**

Juodkrantė, 23 07 2019, 1 spec.; Nida (1), 22 07 2019, 10 spec., 24 07 9 spec. 05 08 2019, 8 spec. (P.I., J.R.).

***Ptilodon cucullina* (Denis & Schiffermüller, 1775)**

Kalniškės, 26 06 2019, 1 spec. (P.I., J.R.).

EREBIDAE

***Laelia coenosa* (Hübner, 1808)**

Kalniškės, 05–08 08 2019, 1 spec. (P.I., J.R.).

***Catocala electa* (Viewig, 1790)**

Marcinkonys, 29 07 2019, 1 spec. (P.I., J.R.).

***Pelosia obtusa* (Herrich-Schäffer, 1847)**

Kalniškės, 03 08 2019, 1 spec. (P.I., J.R.).

***Syngrapha microgamma* (Hübner, 1823)**

Kalniškės, 13 06 2019, 1 spec. (P.I., J.R.).

***Phlogophora meticulosa* (Linnaeus, 1758)**

Juodkrantė, 21 09- 21 10 2019. 30 spec. (P.I., J.R.).

***Litoligia literosa* (Haworth, 1809)**

Būtingė, 25 07 2019, 2 spec. (P.I., J.R.).

***Cryphia algae* (Fabricius, 1775)**

Nida (1), 16 08 2019 1 spec.; Juodkrantė, 23 08 2019, 2 spec.; Nagliai Nat. R., 26 km. 18 08 2019, 2 spec. (P.I., J.R.).

***Calamia tridens* (Hufnagel, 1766)**

Nagliai Nat. R., 26 km. 07 08 2019, 1 spec., 18 08 2019, 1 spec.; Perloja, 27 08 2019, 1 spec. (P.I., J.R.).

***Crypsedra gemmea* (Treitschke, 1825)**

Marcinkonys, 29 07 2019, 4 spec.; Būtingė, 17 08 2019, 2 spec. (P.I., J.R.).

***Mythimna albipuncta* (Denis & Schiffermüller, 1775)**

Baltoji Vokė, 26 08 2019, 1 spec.; Būtingė, 25 07 2019, 2 spec., 17 08 2019, 3 spec.; Kalniškės, 14 05 2019, 1 spec., 20-25 05 2019, 1 spec., 30 06 2019, 1 spec., 03 08 2019, 1 spec.; Marcinkonys 30 06 2019, 2 spec.; Perloja 27 08 2019, 1 spec.; Raguva, 12 08 2019, 2 spec.; Rūdinkų Giria B. P., 10 08 2019, 1 spec., 20 08 2019, 1 spec.; Smėlynė, 30 08 2019, 1 spec. (P.I., J.R.).

***Mythimna straminea* (Treitschke, 1825)**

Nagliai Nat. R., 26 km, 07 08 2019, 1 spec.; Pakrėmpė, 18 06 2019, 3 spec.; (P.I., J.R.).

***Mythimna l-album* (Linnaeus, 1767)**

Juodkrantė 21 09–21 10 2019, 2 spec.; Smėlynė, 29 08 2019, 1 spec. (P.I., J.R.).

***Noctua interjecta* Hübner, 1803**

Būtingė (2), 17 08 2019, 1 spec. (P.I., J.R.).

***Dicycla oo* (Linnaeus, 1758)**

Dūkštų Ažuolynas f., 25 06 2019, 1 spec. (P.I., J.R.).

***Hecatera bicolorata* (Hufnagel, 1766) (P.I., J.R.).**

Kalniškės, 31 07 2019, 1 spec.

***Lenisa geminipuncta* (Haworth, 1809)**

Raguva, 12 08 2019, 1 spec. (P.I., J.R.).

***Actebia praecox* (Linnaeus, 1758)**

Nagliai Nat. R., 26 km, 07 08 2019, 1 spec. (P.I., J.R.).

**Discussion**

Six species of Lepidoptera registered in Lithuania for the first time are presented in this report. *Choreutis diana* (Choreutidae) (Fig. 1) is distributed in Nordic countries, Estonia and Latvia (Aarvik *et al.*, 2017). It was not observed in Latvia for many years (pers. comm. N. Savenkov). Larva feed on: *Betula* sp., *Alnus* sp., *Populus* sp., *Salix* sp., *Prunus* sp (Bengtsson & Johansson, 2011).

*Grapholita gemmiferana* (Tortricidae) (Fig. 2) is distributed in Norway, Sweden and Latvia (Aarvik *et al.*, 2017). The moths are characterized by a basically slate-colored forewings, with an orange-ochreous color in the distal area, also showing various silvery lines and spots. Flying period May–June. Larva feed on *Lathyrus sylvestris* (Svensson, 2006).

*Coleophora amellivora* (Coleophoridae) (Fig. 3) is distributed in Sweden, Finland, Estonia and Latvia (Aarvik *et al.*, 2017) in sandy biotopes with host plant *Solidago virgaurea* (Razowski, 1990).

*Ascalenia viviparella* (Coleophoridae) (Fig. 5) is distributed in Afghanistan, Iran, Ukraine, S. Russia (two generations per year), host plant: *Calligonum* sp. (Koster & Sinev, 2003).



Fig. 1. *Choreutis diana* (Hübner, 1822), photo V. Paznekaitė;



Fig. 2. *Grapholita gemmiferana* (Treitschke, 1835), photo Ž. Pūtys

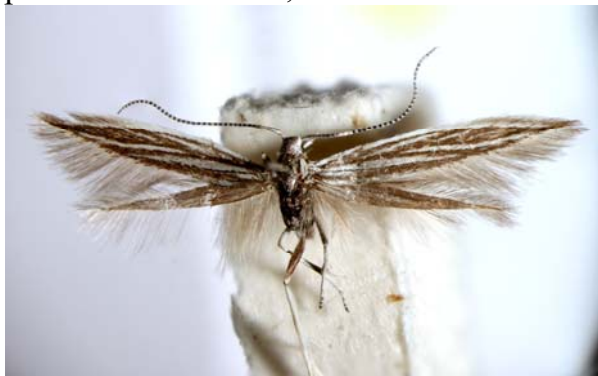


Fig. 3. *Coleophora amellivora* Baldizzone, 1979, photo R. Markevičiūtė



Fig. 4. *Paralipsa gularis* (Zeller, 1877), photo Ž. Pūtys



A

B



Fig. 5. *Ascalenia viviparella* Kasy, 1969, a – imago, b – male genitalia, photo R. Markevičiūtė



Fig. 6. *Oxyptilus tristis* (Zeller, 1841), a – imago, b – fragment of forewing, photo Ž. Pūtys

*Paralipsa gularis* (Pyrilidae) (Fig. 4) – synantropic species, native of East Asia, was found also in Latvia (Savenkov *et al.*, 1996). Larva feed on storage dry fruits, dry plums, nuts (Slamka, 2010).

We report new localities for many rare species. *Oegoconia deauratella* for the first time was found in Lazdijai district in 2016, and then in 2017 1 spec. was found by J.-P. Kaitila (per. com.) close to Nida and this year we caught the moth close to Vilnius (Kalniškės). One mine of *Parectopa robiniella* was found in 2007 in Curonian spit (Ivinskis & Rimšaitė, 2017), but later investigation of *Robinia pseudoacacia* in Lithuania gave no results of rediscovery until in 2019 we found numerous mines in Vilnius, Kaunas, Curonian spit and Eišiškės (A.S., pers. com.). *P. robiniella* in Lithuania damages young leaves of *Robinia* that grow in the shadow. Only one specimen of *Levipalpus hepatariella* (Depressariidae) was known in Lithuania until now from Vilnius environment (Ivinskis, 2004). Numerous specimens of *L. hepatariella* were observed in Rūdininkai biosphere polygon in 2019. *Oxyptilus tristis* (Pterophoridae) (Fig. 6) was mentioned by J. Prüffer (1947) for the first time in Lithuania. Ž. Pūtys collected one specimen of *O. tristis* in 2018 and investigation of genitalia and morphological structures confirmed it is actually *O. tristis*. J. Junnilainen (Finland) confirmed our identification. *Filatima ukrainica* (Gelechiidae) was rediscovered in Nagliai Nature strict reserve in bushes of *Salix rosmarinifolia*. The species was described from Ukraine by Piskunov in 1971, later female was described from Curonian spit (Ivinskis & Piskunov, 1981). Now this species is known also from Sweden (Aarvik *et al.*, 2017) and Hungary (Karsholt *et al.*, 2013). *Salix rosmarinifolia* is here reported as a host plant for the first time, imago in Lithuania were earlier found near bushes of *S. rosmarinifolia*.

*Lopinga achine*, *Lycaena dispar*, *Thaumethopoea pinivora*, *Litholigia literosa* are rare species included in Lithuanian Red Data Book. *Lopinga achine*, *Lycaena dispar* are widely distributed in Lithuania, *Thaumethopoea pinivora*, *Litholigia literosa* are known only from Baltic sea coastal zone.

*Nephoterix angustella* (Pyrilidae), *Phlogophora meticulosa*, *Mythimna albipuncta*, *M. l-album* (Erebidae) were registered in Lithuania as migrant species.

## Acknowledgements

Authors are grateful to Jari-Pekka Kaitila, Jari Junnilainen (Finland), Nikolajs Savenkov, Ivars Šulcs (Latvia), Agata Skorb for assistance in field investigations, and some interesting data. We are specially thankful to Radvilė Markevičiūtė for the help and photos of some of the moths.

## References

- Aarvik L., Bengtsson B. A., Elven H., Ivinskis P., Jurivete U., Karsholt O., Mutanen M., Savenkov N. 2017. Nordic-Baltic checklist of Lepidoptera. *Norwegian Journal of entomology*, Supplement 3: 1–236.
- Bengtsson B. A., Johansson R., Palmqvist G. 2008. *Nationalnyckeln till Sveriges flora och fauna. Fjärilar: Käkmalar-Säckspinnare (Lepidoptera: Micropterigidae–Psychidae)*. ArtDatabanken, SLU, Upsala.
- Bengtsson B. A. & Johansson R. 2011. *Nationalnyckeln till Sveriges flora och fauna. Fjärilar: Bronsmalar-rullvingemalar. (Lepidoptera: Roeslerstammiidae–Lyonetiidae)*. ArtDatabanken, SLU, Upsala.



- Buszko J. 1979. *Przeglądki – Thyrididae, Piórolotki – Pterophoridae. Klucze do oznaczania owadów Polski*, XXVII (43-44), Warszawa-Wrocław.
- Ivinskis P. 2004. *Lepidoptera of Lithuania. Annotated catalogue*. Vilnius.
- Ivinskis P., Piskunov V. 1981. Review of Palaearctic species of genus *Filatima* Busck, 1939 and description of female of species *Filatima ukrainica*, Piskunov, 1971, *femina nova* (Lepidoptera, Gelechiidae) found on Lithuanian coast of the Baltic Sea. *Lietuvos TSR MA darbai C serija*, T. 4 (76): 47–52 (in Russian).
- Ivinskis P., Rimšaitė J. 2008. Records of *Phyllonorycter robiniella* (Clemens, 1859) and *Parectopa robiniella* Clemens, 1863 (Lepidoptera, Gracillariidae) in Lithuania. *Acta Zoologica Lituanica* 18 (2): 130–133.
- Ivinskis P., Rimšaitė J. 2018. Check-list of the Lithuanian *Lepidoptera*. Vilnius.
- Karsholt O., Nieuwerkerken E. J. van & de Jong Y. S. D. M. 2013. *Lepidoptera, Moths. Fauna Europaea version 2.6*, <http://www.faunaeur.org> (Accessed October 23, 2019).
- Koster S., Sinev S. 2003. *Microlepidoptera of Europa*, Vol 5. Stenstrup.
- Leraut P. 2014. *Moths of Europe*. Vol 4, Pyralids 2, Verrieres le Buisson.
- Prüffer J. 1947. *Studia nad motylami Wilenszczyzny*. Torun.
- Razowski J, 1990. *Motyle (Lepidoptera) Polski*, cz.16 Coleophoridae. Warszawa-Krakow.
- Savenkov N., Šulcs I., Kerppola S. and Hulden L. 1996. Checklist of Latvian Lepidoptera- Latvijas taurinu katalogs. *Baptria*, vol. 21 (3a):71 p.
- Slamka F. 2010. *Pyraloidea (Lepidoptera) of Central Europe*. Bratislava.
- Svensson I. 2006. *Nordens vecklare. The Nordic Tortricidae*. Lund.

## Retos ir naujos Lietuvos faunos drugių rūšys

P. IVINSKIS, J. RIMŠAITĖ, Ž. PŪTYS, V. PAZNIKAITĖ

### Santrauka

Pateikiami duomenys apie 59 retas ir 5 naujas Lietuvos faunai drugių rūšis priklausančias 27 šeimoms. Naujos Lietuvos faunai rūšys – *Choreutis diana* (šeima Choreutidae), *Grapholita gemmiferana* (šeima Tortricidae), *Coleophora amellivora*, (šeima Coleophoridae), *Ascalenia viviparella* (šeima Cosmopterigidae), *Paralipsa gularis* (šeima Pyralidae) kaip tikėtinos, buvo ieškomos jau daugelį metų. Rūšys *Nephtopterix angustella*, *Phlogophora meticulosa*, *Mythimna albipuncta*, *M. l-album* yra žinomos migruojančių drugių rūšys. Rūšys *Lopinga achine*, *Lycaena dispar*, *Thaumethopoea pinivora*, *Litholigia literosa* yra įrašytos į Lietuvos Raudonąją knygą. Kuršių Nerijoje pakartotinai rasta *Filatima ukrainica*, po pirmojo šios rūšies radimo prie Nidos (Ivinskis & Piskunov, 1981), tik po kelių dešimtmečių 2017 intensyviai ieškant buvo rasta jų populiacija, o 2019 nustatytas mitybinis augalas – *Salix rosmarinifolija*. Pateikiami duomenys apie naujas retų rūšių radimvietes Lietuvoje.

Received: 6 November, 2019