

## NEW LEPIDOPTERA SPECIES FOR THE FAUNA OF BELARUS RECORDED IN 1989, 2016–2017

GIEDRIUS ŠVITRA<sup>1</sup>, ALEKSANDR PISANENKO<sup>2</sup>

<sup>1</sup>Lithuanian Entomological Society, Akademijos 2, LT-08412 Vilnius, Lithuania.

E-mail: giedsvis@gmail.com.

<sup>2</sup>Zoological Museum of Belorussian State University, Kurchatova str. 10, 220080 Minsk, Republic of Belarus. E-mail: zoomuseumbsu@mail.ru

### Introduction

New data on Lepidoptera fauna and distribution in Belarus is added every year. The objective of this article is to present data on 3 moths species – *Triphosa dubitata*, *Chesias legatella* and *Nola cristatula* – registered in Belarus for the first time.

### Material and Methods

In 2016–2017 moths were collected by the author of this paper A. Pisanenko (A.P.) and identified by G. Švitra. The material was collected at night by attracting insects to the artificial light source of mercury-fluorescent lamp DRL-400. Data on *Chesias legatella* was obtained from the Siberian Zoological Museum after studying the list of Larentiinae (Geometridae) that are deposited in that museum (List..., 2017).

Genitalia preparations were made for the identification of *Nola cristatula*. The genitalia pictures from Fibiger *et al.* (2009) were used for the comparison of the material.

Taxonomical treatment follows Nordic-Baltic Checklist of Lepidoptera (Aarvik *et al.*, 2017). Information on the locality, finding date and the number of the recorded individuals is provided for every species. Collected specimens are stored in the private collection of A. Pisanenko (Minsk) and in the collection of the Siberian Zoological Museum (Novosibirsk).

### List of records

#### GEOMETRIDAE

##### *Triphosa dubitata* (Linnaeus, 1758)

Minsk prov., Dzerzhinsk distr., 1,5 km SE from railway st. Berezha, Podberezhe (53.70404 N, 27.28245 E), 05 09 2016, 1 spec. (A.P.).

##### *Chesias legatella* (Denis & Schiffermüller, 1775)

Beresina Nat. Res., Domzhericy (54.76671 N, 28.26667 E), 29 09 1989, dry meadow, Malaise trap, A. Tereshkin leg.

#### NOLIDAE

##### *Nola cristatula* (Hübner, 1793)

Minsk prov., Dzerzhinsk distr., 1,5 km SE from railway st. Berezha, Podberezhe (53.70404 N, 27.28245 E), 01 09 2016, 1 spec., 17 07 2017, 1 spec., 29 07 2017, 1 spec., 30 07 2017, 1 spec. (A.P.).

## Discussion

*Triphosa dubitata* (Linnaeus, 1758) is a Palearctic species, in Europe found from British Isles and France to the Urals, in the north to southern Scandinavia, in the south to the Alps and Carpathians and isolated populations in northern Spain and mountains of Balkan peninsula (Hausmann & Viijdalepp, 2012). Of countries neighboring to Belarus *T. dubitata* is known from Poland, Lithuania, Latvia, Ukraine, and Russia (Karsholt & van Nieuwerkerken, 2013, Aarvik *et al.*, 2017). Univoltine from early July to early June, overwintering as imago in dry caves and anthropogenic structures with similar conditions (Hausmann & Viijdalepp, 2012). Oligotrophous on deciduous trees and shrubs, with preference for *Rhamnus* sp., *Frangula alnus*, *Prunus spinosa* and *Crataegus* sp. (Hausmann & Viijdalepp, 2012). Species is silvicolous, troglophilous, inhabits gardens, parks, cemeteries, hedges, fringes of deciduous forests (Hausmann & Viijdalepp, 2012). In Belarus, it was found in a garden that can be characterized by high variety of different trees and shrubs.

*Chesias legatella* (Denis & Schiffermüller, 1775) is a Sub-Mediterranean species, distributed from Iberian Peninsula across Western and Central Europe to British Isles, Southern Scandinavia and Baltic countries. Isolated records are known from Finland, Slovakia, Hungary, and Italy (Hausmann & Viijdalepp, 2012). Of countries neighboring to Belarus *Chesias legatella* is known from Poland, Lithuania, and Latvia, not known from Ukraine, neighboring region of Russia (Aarvik *et al.*, 2017, Karsholt & van Nieuwerkerken, 2013). Species is univoltine from late September to early November (Hausmann & Viijdalepp, 2012). Larva oligotrophous on different species of *Cytisus* (Fabaceae), mainly *C. scoparius*, preferring flowers (Hausmann & Viijdalepp, 2012). *Ch. legatella* is a xerothermophilous species, preferring heathland, rides and clearings with *Cytisus*, often in anthropogenic habitats (Hausmann & Viijdalepp, 2012).

*Nola cristatula* (Hübner, 1793) is a Southern European species, it is not known outside Europe (Fibiger *et al.*, 2009). From neighbouring countries *N. cristatula* is known from Southern and Eastern Poland (Buszko & Masłowski, 2012; Karsholt & van Nieuwerkerken, 2013) and Lithuania (Švitra *et al.*, 2015). The species is hygrophilous, and is found on open moors and brookvalleys where its primary foodplant *Mentha aquatica* is abundant (Fibiger *et al.*, 2009). The moths fly from mid June to the beginning of August in one generation (Fibiger *et al.*, 2009). Buszko & Masłowski (2012) indicate the flying time from the first decade of July to the second decade of August in Poland. In our case it was caught from the middle of July to the beginning of September. *N. cristatula* was found in a garden that can be characterized by high variety of different trees, shrubs and herbs, including *Mentha* sp.

## Acknowledgements

We would like to thank curator of the Siberian Zoological Museum S. V. Vasilenko for providing photo and information on *Chesias legatella* recorded from Belarus.

## References

- Aarvik L., Bengtsson B. A., Elven H., Ivinskis P., Jürivete U., Karsholt O., Mutanen M., Savenkov N. 2017. Nordic-Baltic Checklist of Lepidoptera. *Norwegian Journal of Entomology, Supplement* 3: 1–236.

- Buszko J., Masłowski J. 2012. *Motyle nocne Polski. Macrolepidoptera: Część I.* Warszawa.
- Fibiger M., Ronkay L., Steiner A. & Zilli A. 2009. *Pantheinae, Dilobinae, Acronicitinae, Nolinae, Eustrotiinae, Acontiinae, Metoponiinae, Heliiothinae and Bryophilinae. Noctuidae Europaea.* Vol. 11: Sorø: Entomological press.
- Hausmann A., Viiidalepp J. 2012. *Larentiinae I.* In A. Hausmann (ed.): *The Geometrid Moths of Europe 3*: 1–743.
- Karsholt O & van Nieukerken E. J. (eds.). 2013. *Fauna Europaea: Lepidoptera, Moths.* Fauna Europaea version 2017.06, <https://faunaeur.org> (Accessed October 26, 2017).
- List of Larentiinae (Geometridae) in the collection of the Siberian Zoological Museum, <http://szmn.eco.nsc.ru/Lepidop/Geometr/larent.htm> (Accessed October 15, 2017).
- Švitra G., Bačianskas V., Inokaitis V., Petraška A., Ūsaitis T., 2015. Two new and 140 rare for the Lithuanian fauna Lepidoptera species recorded in 2013–2015. *New and Rare for Lithuania Insect Species 27*: 76–95.

### Naujos Baltarusijos faunos drugių (Lepidoptera) rūšys, aptiktos 1989, 2016–2017 metais

G. ŠVITRA, A. PISANENKO

#### Santrauka

Straipsnyje pateikiami duomenys apie 3 naujas Baltarusijos faunos drugių rūšis – *Triphosa dubitata*, *Chesias legatella* ir *Nola cristatula*. Kiekvienai rūšiai pateikiamos radimo vietos, data, stebėtų individų skaičius, rinkėjai.



Fig. 1. *Triphosa dubitata* (Podberezhje, 05 09 2016, leg. A. Pisanenko, det. G. Švitra)



Fig. 2. *Chesias legatella* (Domzhericy, 29 09 1989, leg. A. Tereshkin, det. S.V. Vasilenko)

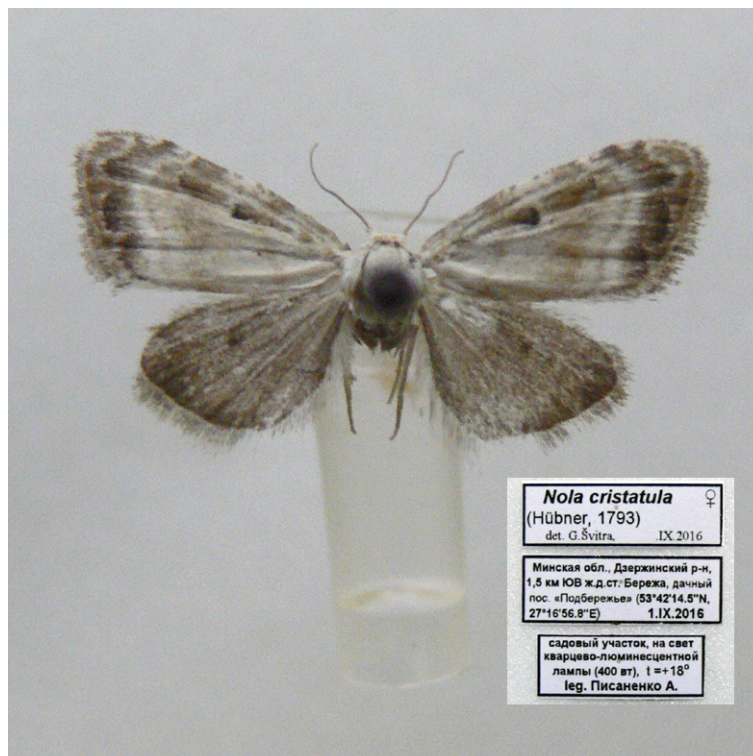


Fig. 3. *Nola cristatula* (Podberezhye, 05 09 2016, leg. A. Pisanenko, det. G. Švitra)

Received: 6 November, 2017