

## THREE SPECIES OF LEAFROLLER AND SNOUT MOTHS (LEPIDOPTERA: TORTRICIDAE, PYRALIDAE) NEW FOR THE LITHUANIAN FAUNA, REGISTERED IN 2015

VITALIJUS BAČIANSKAS

Lithuanian Entomological Society, Akademijos 2, LT-08412 Vilnius, Lithuania.  
E-mail: vitalbata@gmail.com

### Introduction

The snout and leafroller moths are large Pyralidae and Tortricidae families in Lithuanian Lepidoptera fauna. In the last check-list of Lithuanian Lepidoptera (Ivinskis, 2004), 203 species of snout moths and 364 species of leafroller moths were included. After that publication the list of Lithuanian species of snout and leafroller moths was upgraded several times by different authors (Kazlauskas, 2006; Kazlauskas, Šlėnys, 2007; Ivinskis, Rimšaitė, 2012). Four snout moths' and 9 leafroller moths' species new for the Lithuanian fauna were added to the list.

This paper presents information on three new Lepidoptera species for the Lithuanian fauna: one new species for Pyralidae family and two species for Tortricidae family.

### Material and Methods

The material was collected by the author of this report V. Bačianskas (V.B.). Some material was collected by K. Jarmolavičius (K.J.). Moths were attracted using 160W and 250W mercury lamps. One species was identified from the photo taken in nature. The geographical coordinates were measured with a help of Garmin eTrex H GPS receiver. The material was identified using the identification guides of Razowski (2001) and Slamka (2013).

The collected specimens are deposited in the collection of V. Bačianskas in Kaunas T. Ivanauskas Zoological Museum.

#### List of localities

Renavas	Mažeikiai district	56°13'42,4"N, 22°03'21,9"E;
Taujėnai Miškas f.	Ukmergė district	55°26'57,5"N, 24°38'44,1"E;
Ūdininkai, lake Galadusys env.	Lazdijai district	54°11'46,8"N, 23°25'07,7"E.

### List of species and notes

#### TORTRICIDAE

##### *Phtheochroa schreibersiana* (Frölich, 1828) (Fig. 1)

Taujėnai, Taujėnų Miškas f., 25 05 2015, 1 spec. (V.B.).

Notes. This species is spread in Central Europe, sometimes quite frequent. The larva lives on *Ulmus campestris* and *Populus sp.* Habitat: forest edges and parks (Razowski,

2001). This species is found in Poland (Karsholt *et al.*, 2013), Belarus (Мержеевская *et al.*, 1976), not found in Latvia (Savenkov, Šulc, 2010) and Estonia (Jürivete, Õunap, 2008). One specimen was found in the mixed forest in the central part of Lithuania.

***Pammene regiana* (Zeller, 1849) (Fig. 2)**

Renavas, 30 05 2015, 1 spec. (K.J.).

Notes. This species is spread in Central Europe, but local. Its larva lives on *Acer pseudoplatanus*, *A. platanoides*, *A. campestre* during August-September. Habitat: deciduos forests. This species is also found in Poland (Karsholt *et al.*, 2013), Latvia (Savenkov, Šulc, 2010) and Estonia (Jürivete, Õunap, 2008), not found in Belarus (Мержеевская *et al.*, 1976). Specimen was found in the Renavas park on a tree trunk and photographed. Renavas is in the north-western part of Lithuania.

PYRALIDAE

***Sclerocona acutella* (Eversmann, 1842) (Fig. 3)**

Ūdininkai, lake Galadusys env., 13 06 2015, 1 spec. (V.B.).

Notes. This species is rather local, distributed mainly in southern part of Central Europe. The records from England and S Sweden can be considered as specimens introduced with reeds. Habitat: inhabits swampy habitats overgrown with reeds e.g. floodplain forests. The larva lives from July to September amongst the rolled leaves of reed (*Phragmites* sp.) (Slamka, 2013). Not found in Latvia (Savenkov, Šulc, 2010), Estonia (Jürivete, Õunap, 2008), Poland (Karsholt *et al.*, 2013), found in Belarus (Мержеевская *et al.*, 1976). Specimen was found near the lake Galadusys in the south-western part of Lithuania.

**Acknowledgements**

The author is grateful to K. Jarmolavičius and E. Černevičiūtė for the information and photo of *Pammene regiana*.

**References**

- Ivinskis P. 2004. *Lepidoptera of Lithuania. Annotated catalogue*. Vilnius: Institute of Ecology of Vilnius University.
- Ivinskis P., Rimšaitė J. 2012. Lepidoptera species new for Lithuanian fauna. *New and Rare for Lithuania Insect species* 24: 24–29.
- Jürivete U., Õunap E. 2008. *Eesti liblikad kataloog. Estonian Lepidoptera catalogue*. Tallinn.
- Karsholt O & van Nieukerken E. J. van. 2013. Fauna Europaea: Lepidoptera, Moths. Fauna Europaea version 2.6.2, <http://www.faunaeur.org> (Accessed October 3, 2015).
- Kazlauskas R. 2006. New and rare for Lithuania Lepidoptera species collected in Šešuolėliai environs (Širvintos district) in 2006. *New and Rare for Lithuania Insect species* 17: 34–40.
- Kazlauskas R., Šlėnys P. 2007. Data on new and rare Lepidoptera species for Lithuania, collected in 1987-2007. *New and Rare for Lithuania Insect species* 19: 33–34.
- Мержеевская О. И., Литвинова А. Н., Молчанова Р. В. 1976. *Чешуекрылые (Lepidoptera) Белоруссии (каталог)*. Минск.
- Razowski J. 2001. *Die Tortriciden (Lepidoptera, Tortricidae) Mitteleuropas*. Bratislava.
- Savenkov N., Šulcs I. 2010. *Latvijas taurini catalogs. Latvian Lepidoptera Catalogue*.

Tallinn.

Slamka F. 2013. *Pyraloidea of Europe, volume 3, Pyraustinae & Spilomelinae*.  
Bratislava.

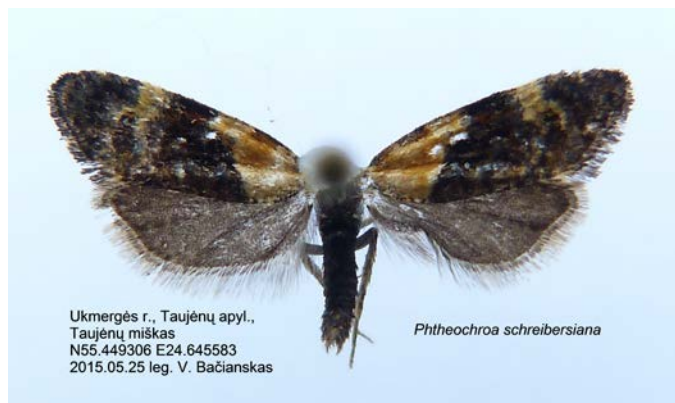


Fig. 1. *Phtheochroa schreibersiana*  
Photo V. Bačianskas



Fig. 2. *Pammene regiana*  
Photo E. Černevičiūtė



Fig. 3. *Sclerocona acutellus*  
Photo V. Bačianskas

**Trys naujos Lietuvos faunos lapsukių ir ugniukų (Lepidoptera: Tortricidae, Pyralidae) rūšys, aptiktos 2015 metais**

*V. BAČIANSKAS*

**Santrauka**

Straipsnyje pateikiami duomenys apie 3 naujas Lietuvos faunai drugių rūšis, surastas 3 Lietuvos rajonuose 2015 metais. Tai *Phtheochroa schreibersiana* ir *Pammene regiana* (Tortricidae) bei *Sclerocona acutella* (Pyralidae). Pateikiami duomenys apie kiekvienos rūšies radimo vietą, datą, stebėtų individų skaičių, stebėtojus.

*Received: 15 October, 2015*