

MELITAEA BRITOMARTIS Assman, 1847 (NYMPHALIDAE) – A NEW SPECIES FOR THE LITHUANIAN LEPIDOPTERA FAUNA

RIČARDAS KAZLAUSKAS¹, GIEDRIUS ŠVITRA²

¹Department of Zoology, Vilnius University, M.K. Čiurlionio g. 21/27, LT-03101 Vilnius. E-mail: r.kazlauskas@gmail.com

²Lithuanian Entomological Society, Akademijos g. 2, LT-08412, Vilnius. E-mail: giedsvis@is.lt

Introduction

The nymphalid species *Melitaea britomartis* has been searched in Lithuania for a long time. This species is widespread in Central Europe and it is known from Poland and Belarus (Van Swaay, Warren, 1999), southeastern Sweden (Henriksen, Kreutzer, 1982). Therefore the occurrence of *Melitaea britomartis* in Lithuania was predictable. Recent records show that *Melitaea britomartis* lives in our country.

Material and Methods

The butterflies were collected by the authors (R.K. and G.Š. respectively) using an entomological sweeping net in 1997–2004. The identification of *M. britomartis* was done according to the drawings of G. Ebert and E. Rennwald (1993). The material is deposited in the collection of the Department of Zoology of Vilnius University and in the private collection of Giedrius Švitra.

Results and conclusions

Three finding places of *Melitaea britomartis* are known in Lithuania (Fig. 1): Lazd, Veisiejai, Petroškų Miškas f. (54°06'27"N, 23°36'30"E), 24 06 2001, 3 ♂ (G.Š.), dry meadows; Kapčiamiestis (54°00'00"N, 23°39'21"E), 18 07 2004, 7 ♂ 2 ♀ (R.K.), meadows in the Baltoji Ančia river valley; Vln, Rudamina env., Daubėnai (54°34'43"N, 25°25'30"E), 22 06 1997, 1 ind. (R.K.), a boundary of dry and wet meadows.

Melitaea britomartis appeared to vary in size and exterior. Genitalia structure varies as well. The features like the shape of the projection of *valva* (Fig. 2a), the shape of *uncus* (Fig. 2b), the darker outer marginal band of the underside of

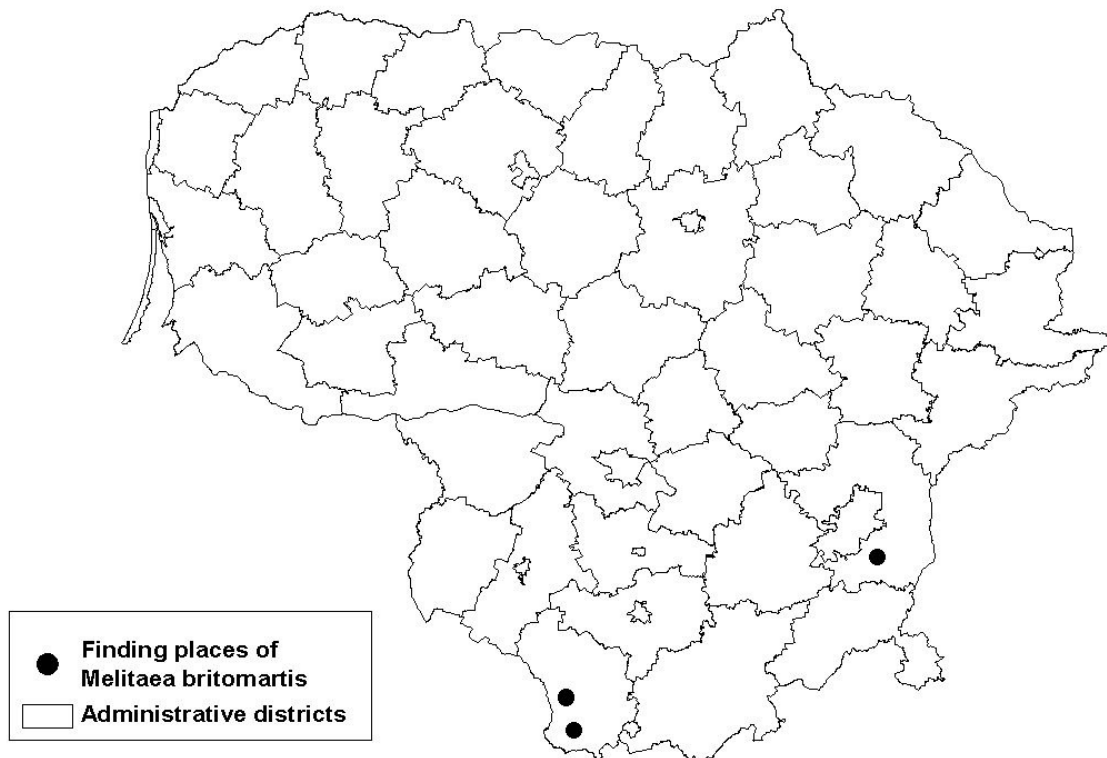


Figure 1. Distribution of *Melitaea britomartis* in Lithuania

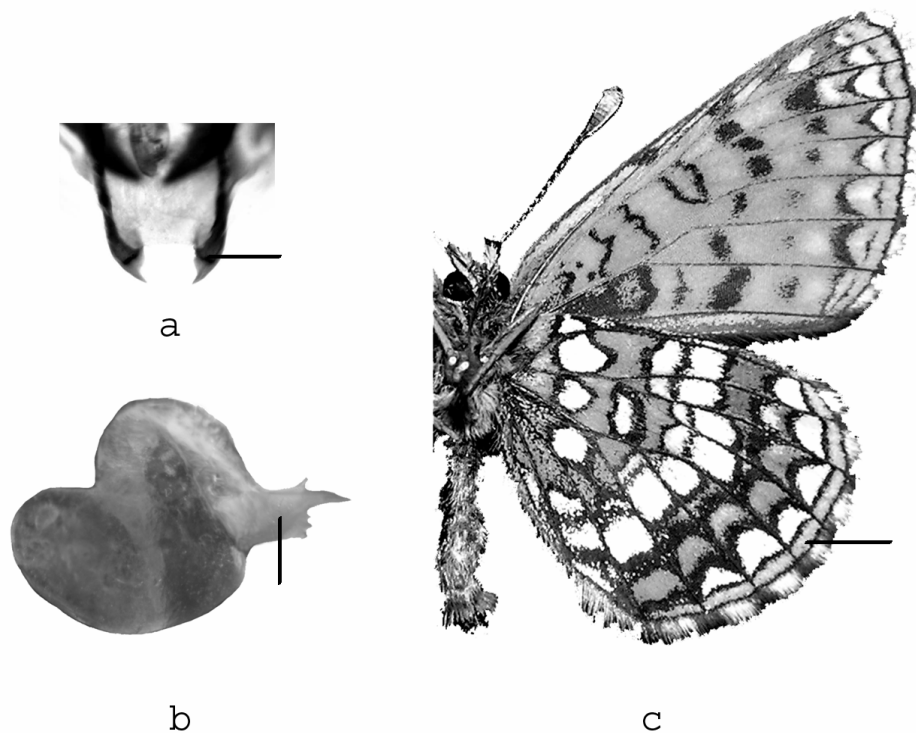


Figure 2. Features for the identification of *Melitaea britomartis*: a – uncus (ventral view); b – valva (lateral view); c – underside of wings (Lazd, Veisiejai, Petroškų miškas f., 24 06 2001, ♂)

wings differing from the adjacent lightly yellow lunules (Fig. 2c), darker markings of the upper side of wings can help to distinguish this species from *Melitaea athalia* (see also figures by G. Ebert & E. Rennwald (1993) and by P. Ivinskis & J. Augustauskas (2004)). Both species can be found in the same habitat.

At present, *M. britomartis* is found only in the southern part of Lithuania. Further investigations of the distribution range of this species in Lithuania are necessary.

Acknowledgements

The authors are very thankful to Dr. S. Podėnas (Vilnius University) for the possibility to use his equipment for taking photos of genitalia structures. The authors are grateful to Dr. K. Spitzer and Mr. J. Jaroš (Institute of Entomology, Czech Republic) for the loan of the comparative material.

References

- Ebert G., Rennwald E. 1993. *Die Schmetterlinge Baden-Wurttembergs*. Band 1. Tagfalter 1. Stuttgart.
- Henriksen H.J., Kreutzer Ib. 1982. *The Butterflies of Scandinavia in Nature*. Odense.
- Ivinskis P., Augustauskas J. 2004. *Lietuvos dieniniai drugiai*. Kaunas.
- Van Swaay C.A.M., Warren M.S. 1999. *Red Data book of European butterflies (Rhopalocera)*. Nature and Environment, No. 99. Strasbourg: Council of Europe Publishing.

***Melitaea britomartis* Assman, 1847 (Lepidoptera, Nymphalidae) – nauja Lietuvos faunos drugių rūšis**

R. KAZLAUSKAS, G. ŠVITRA

Santrauka

Straipsnyje pateikiami duomenys apie naują Lietuvoje Nymphalidae šeimos drugių rūšį *Melitaea britomartis*. Nurodomos trys žinomos šios rūšies radvietės Lietuvoje, pateikiamas paplitimo žemėlapis, aprašomos buveinės, nurodomos gaudymo datos, individų skaičius, aptariami svarbiausi skiriamieji *M. britomartis* bruožai.

Received: November 28, 2004